

2N6383 2N6384 2N6385



NPN Silicon Power Darlington Transistors

Rev. V3

Features

- Available in JAN, JANTX, JANTXV per MIL-PRF-19500/523
- TO-3 (TO-204AA) Package
- Designed for Power Amplifier and Shunt and Series Regulator Applications



Electrical Characteristics ($T_A = +25^\circ\text{C}$ unless otherwise noted)

Parameter	Test Conditions	Symbol	Units	Min.	Max.
Collector - Emitter Breakdown Voltage	$I_C = 200 \text{ mA dc}$ 2N6383 2N6384 2N6385	$V_{(BR)CEO}$	V dc	40 60 80	—
Collector - Emitter Breakdown Voltage	$I_C = 200 \text{ mA dc}$, $R_{BB} = 100\Omega$ 2N6383 2N6384 2N6385	$V_{(BR)CER}$	V dc	40 60 80	—
Collector - Base Cutoff Current	$V_{CE} = 40 \text{ V dc}$, 2N6383 $V_{CE} = 60 \text{ V dc}$, 2N6384 $V_{CE} = 80 \text{ V dc}$, 2N6385	I_{CB01}	mA dc	—	1.0
Emitter - Base Cutoff Current	$V_{EB} = 5 \text{ V dc}$	I_{EBO}	mA dc	—	5.0
Collector - Emitter Cutoff Current	$V_{CE} = 40 \text{ V dc}$, 2N6383 $V_{CE} = 60 \text{ V dc}$, 2N6384 $V_{CE} = 80 \text{ V dc}$, 2N6385	I_{CEO}	mA dc	—	1.0
Collector - Emitter Cutoff Current	$V_{CE} = 40 \text{ V dc}$, $V_{BE} = -1.5 \text{ Vdc}$, 2N6383 $V_{CE} = 60 \text{ V dc}$, $V_{BE} = -1.5 \text{ Vdc}$, 2N6384 $V_{CE} = 80 \text{ V dc}$, $V_{BE} = -1.5 \text{ Vdc}$, 2N6385	I_{CEX1}	$\mu\text{A dc}$	—	100
Forward Current Transfer Ratio	$V_{CE} = 3 \text{ V dc}$, $I_C = 5.0 \text{ A dc}$ $V_{CE} = 3 \text{ V dc}$, $I_C = 10 \text{ A dc}$	h_{FE1} h_{FE2}	-	1,000 100	20,000
Saturation Voltage and Resistance	$I_C = 5.0 \text{ A dc}$, $I_B = 10 \text{ mA dc}$ $I_C = 10 \text{ A dc}$, $I_B = 0.1 \text{ A dc}$	$V_{CE(SAT)1}$ $V_{CE(SAT)2}$	V dc	—	2.0 3.0
Base - Emitter Voltage (Unsaturated)	$V_{CE} = 3.0 \text{ V dc}$, $I_C = 5.0 \text{ A dc}$ $V_{CE} = 3.0 \text{ V dc}$, $I_C = 10 \text{ A dc}$	$V_{BE(on)1}$ $V_{BE(on)2}$	V dc	—	2.8 4.5
Collector-Emitter Cutoff Current	$T_A = +150^\circ\text{C}$ $V_{CE} = 40 \text{ V dc}$, $V_{BE} = -1.5 \text{ Vdc}$, 2N6383 $V_{CE} = 60 \text{ V dc}$, $V_{BE} = -1.5 \text{ Vdc}$, 2N6384 $V_{CE} = 80 \text{ V dc}$, $V_{BE} = -1.5 \text{ Vdc}$, 2N6385	I_{CEX2}	mA dc	—	3.0
Forward - Current Transfer Ratio	$T_A = -55^\circ\text{C}$ $V_{CE} = 3.0 \text{ V dc}$, $I_C = 5.0 \text{ A dc}$	h_{FE3}		200	

1

VPT Components and its affiliates reserve the right to make changes to the product(s) or information contained herein without notice.
Visit www.vptcomponents.com for additional data sheets and product information.

For further information and support please visit:
info@vptcomponents.com

2N6383 2N6384 2N6385



NPN Silicon Power Darlington Transistors

Rev. V3

Electrical Characteristics ($T_A = +25^\circ\text{C}$ unless otherwise noted)

Parameter	Test Conditions	Symbol	Units	Min.	Max.
Magnitude of Small-Signal Short-Circuit Forward-Current Transfer Ratio	$I_C = 1 \text{ A dc}, V_{CE} = 5 \text{ V dc}, f = 1 \text{ MHz}$	$ h_{fe} $	-	20	300
Open-Circuit Output Capacitance	$V_{CB} = 10 \text{ V dc}, I_E = 0, 100 \text{ kHz} \leq f \leq 1 \text{ MHz}$	C_{obo}	pF	—	200
Turn-On Time	$V_{CC} = 30 \text{ V dc}; I_C = 5 \text{ A dc}, I_{B1} = 20 \text{ mA dc}$	t_{on}	μs	—	2.5
Turn-Off Time	$V_{CC} = 30 \text{ V dc}; I_C = 5 \text{ A dc}, I_{B1} = -I_{B2} = 20 \text{ mA dc}$	t_{off}	μs	—	10

Absolute Maximum Ratings ($T_A = +25^\circ\text{C}$ unless otherwise noted)

Ratings	Symbol	2N6383	2N6384	2N6385	Units
Collector - Emitter Voltage	V_{CEO}	40	60	80	V dc
Collector - Base Voltage	V_{CBO}	40	60	80	V dc
Emitter - Base Voltage	V_{EBO}	5			V dc
Collector Current	I_C	10			A dc
Base Current	I_B	0.25			A dc
Total Power Dissipation @ $T_A = +25^\circ\text{C}$ ⁽¹⁾ @ $T_C = +25^\circ\text{C}$ ⁽²⁾	P_T	6 100			W
Operating & Storage Temperature Range	T_J, T_{STG}	-55 to +175			$^\circ\text{C}$

(1) Derate linearly @ 34.2 mW / $^\circ\text{C}$ above $T_A > 25^\circ\text{C}$.

(2) Derate linearly @ 571 mW / $^\circ\text{C}$ above $T_C > 25^\circ\text{C}$.

Thermal Characteristics

Characteristics	Symbol	Max. Value
Thermal Resistance, Junction to Case	$R_{\theta JC}$	1.75 $^\circ\text{C}/\text{W}$

Safe Operating Area

DC Tests: $T_C = +25^\circ\text{C}, 1 \text{ Cycle}, t = 1.0 \text{ s}$

Test 1: $V_{CE} = 10 \text{ Vdc}, I_C = 10 \text{ A dc}, \text{ All Types}$

Test 2: $V_{CE} = 30 \text{ Vdc}, I_C = 3.33 \text{ A dc}, \text{ All Types}$

Test 3: $V_{CE} = 40 \text{ Vdc}, I_C = 1.5 \text{ A dc}, 2\text{N}6383$

$V_{CE} = 60 \text{ Vdc}, I_C = 0.4 \text{ A dc}, 2\text{N}6384$

$V_{CE} = 80 \text{ Vdc}, I_C = 0.16 \text{ A dc}, 2\text{N}6385$

Outline Drawing (TO-3)

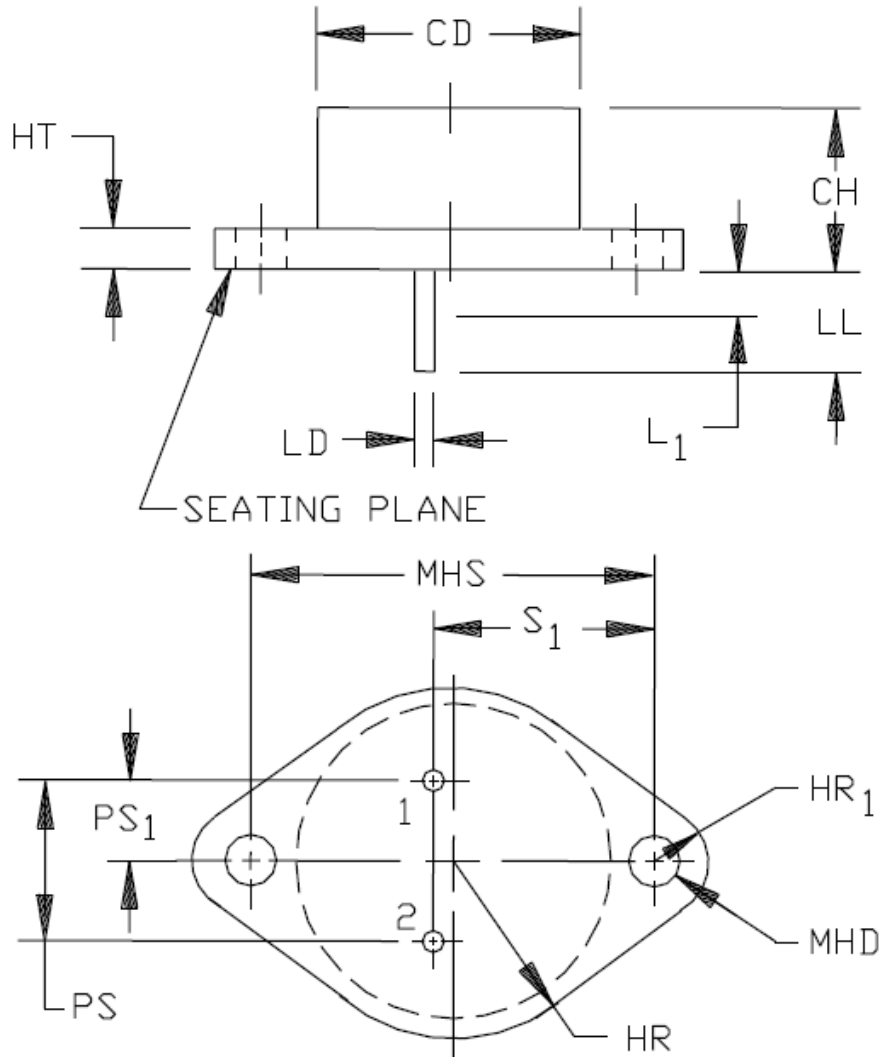


FIGURE 1. Physical dimensions (TO-204AA, formerly TO-3)

Outline Drawing (TO-3)

Symbol	Dimensions				Notes
	Inches		Millimeters		
	Min	Max	Min	Max	
CD		.875		22.23	5
CH	.250	.450	6.35	11.43	
HR	.495	.525	12.57	13.34	6
HR ₁	.131	.188	3.33	4.78	6
HT	.050	.135	1.27	3.43	
LD	.038	.043	0.97	1.09	7, 8, 9
LL	.312	.500	7.92	12.7	
L ₁		.050		1.27	
MHD	.151	.161	3.84	4.09	10
MHS	1.177	1.197	29.90	30.40	
PS	.420	.440	10.67	11.18	8
PS ₁	.205	.225	5.21	5.72	7, 8
S ₁	.655	.675	16.64	17.15	7, 8

NOTES:

1. Dimensions are in inches. Millimeters are given for general information only.
2. Terminal 1 is the emitter and terminal 2 is the base. The collector shall be electrically connected to the case.
3. The seating plane of the header shall be flat within .001 inch (0.03 mm) concave to .004 inch (0.10 mm) convex inside a .930 inch (23.62 mm) diameter circle on the center of the header and flat within .001 inch (0.03 mm) concave to .006 inch (0.15 mm) convex overall.
4. Mounting holes (MHD) shall be deburred on the seating plane side.
5. Body contour is optional within zone defined by dimension CD.
6. Applies to all sides (HR) or both ends (HR₁).
7. Applies to both terminals.
8. Measurement for this dimension shall be taken at points .050 inch (1.27 mm) to .055 inch (1.40 mm) below the seating plane. When gauge is not used, measurement shall be made at seating plane.
9. Lead diameter shall not exceed twice dimension LD within dimension L₁.
10. Applies to both holes.
11. In accordance with ASME Y14.5M, diameters are equivalent to ϕ x symbology.

FIGURE 1. Physical dimensions (TO-204AA, formerly TO-3) - Continued.

2N6383 2N6384 2N6385



NPN Silicon Power Darlington Transistors

Rev. V3

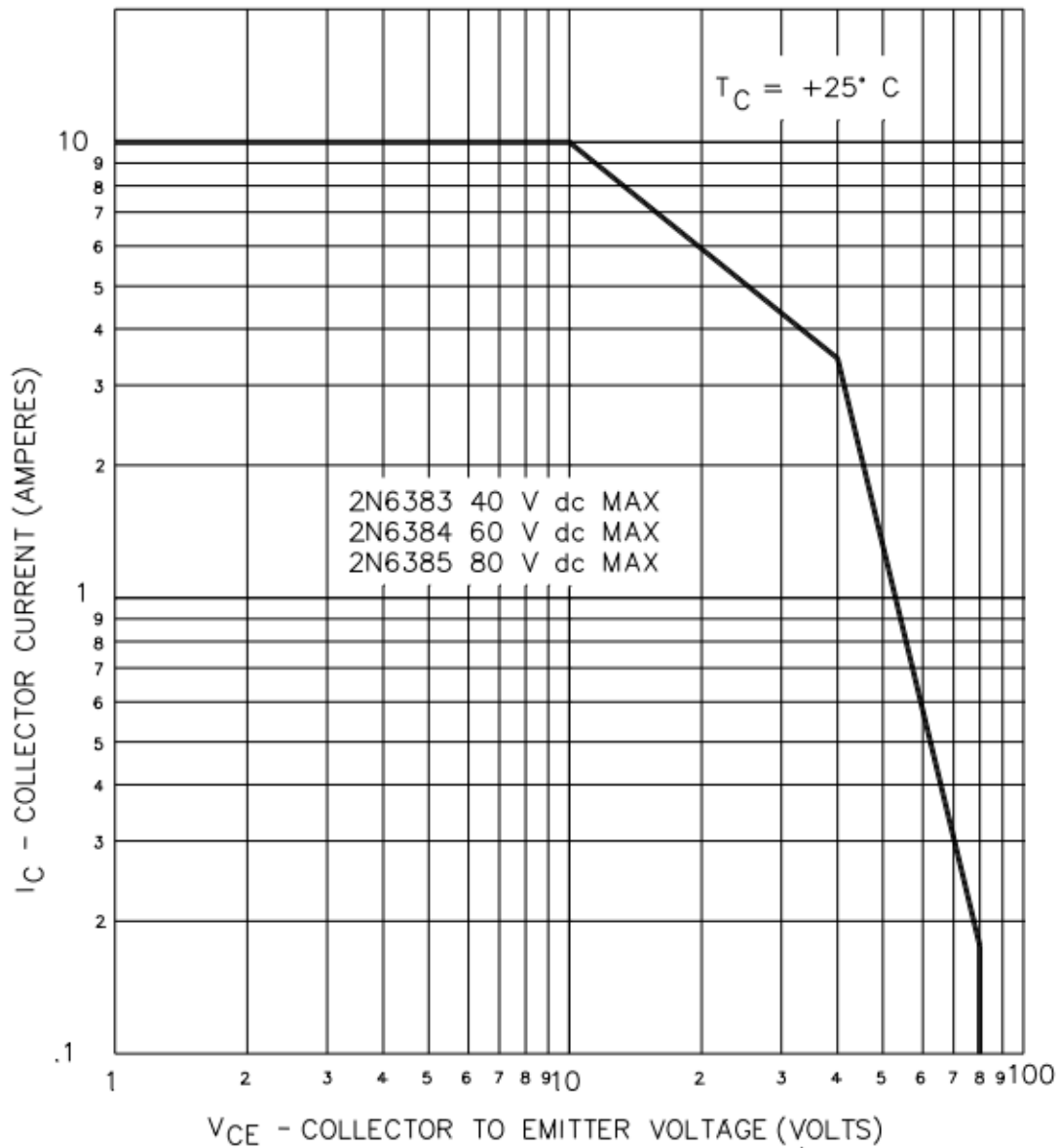


FIGURE 3. Maximum safe operating graph (continuous dc).

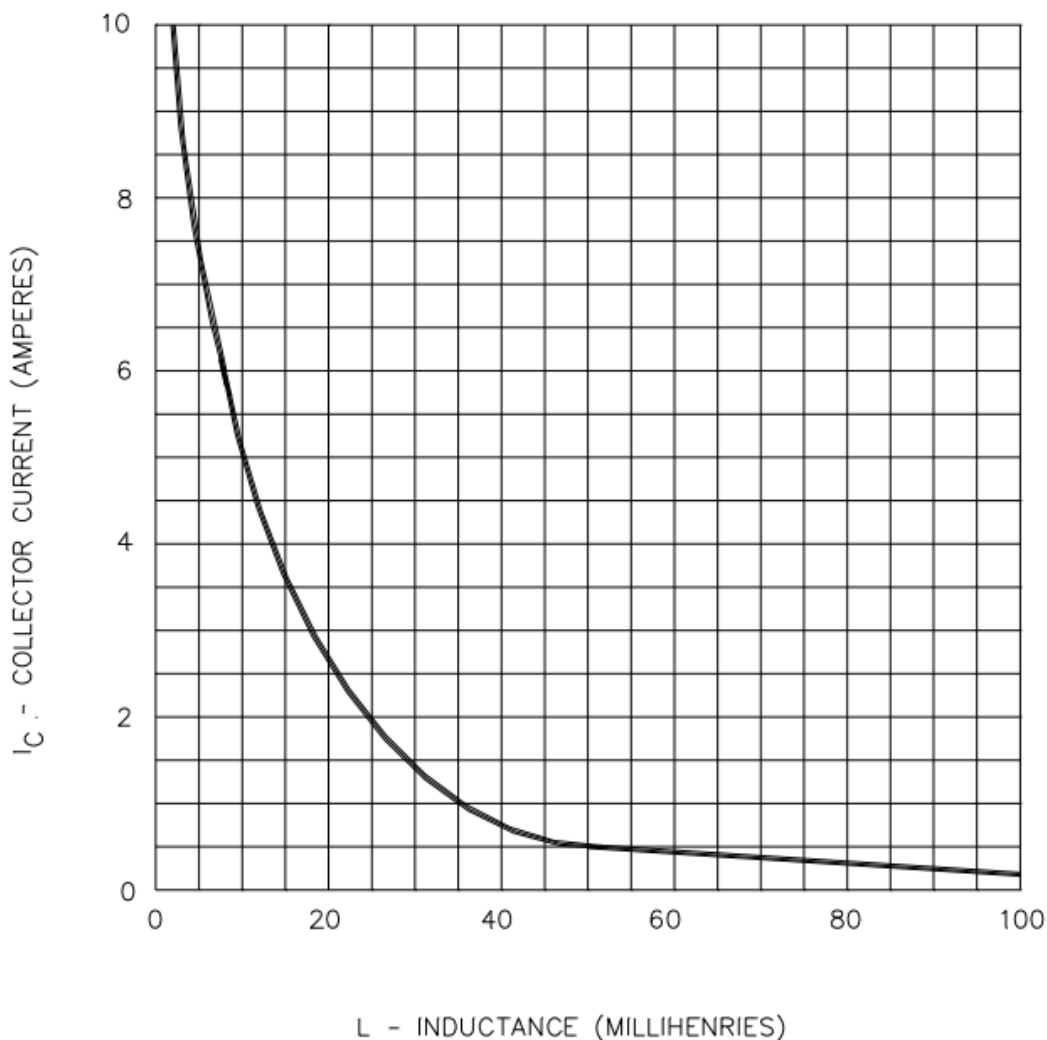


FIGURE 4. Safe operating area for switching between saturation and cutoff (unclamped inductive load).

VPT COMPONENTS. ALL RIGHTS RESERVED.

Information in this document is provided in connection with VPT Components products. These materials are provided by VPT Components as a service to its customers and may be used for informational purposes only. Except as provided in VPT Components Terms and Conditions of Sale for such products or in any separate agreement related to this document, VPT Components assumes no liability whatsoever. VPT Components assumes no responsibility for errors or omissions in these materials. VPT Components may make changes to specifications and product descriptions at any time, without notice. VPT Components makes no commitment to update the information and shall have no responsibility whatsoever for conflicts or incompatibilities arising from future changes to its specifications and product descriptions. No license, express or implied, by estoppel or otherwise, to any intellectual property rights is granted by this document.

THESE MATERIALS ARE PROVIDED "AS IS" WITHOUT WARRANTY OF ANY KIND, EITHER EXPRESS OR IMPLIED, RELATING TO SALE AND/OR USE OF VPT COMPONENTS PRODUCTS INCLUDING LIABILITY OR WARRANTIES RELATING TO FITNESS FOR A PARTICULAR PURPOSE, CONSEQUENTIAL OR INCIDENTAL DAMAGES, MERCHANTABILITY, OR INFRINGEMENT OF ANY PATENT, COPYRIGHT OR OTHER INTELLECTUAL PROPERTY RIGHT. VPT COMPONENTS FURTHER DOES NOT WARRANT THE ACCURACY OR COMPLETENESS OF THE INFORMATION, TEXT, GRAPHICS OR OTHER ITEMS CONTAINED WITHIN THESE MATERIALS. VPT COMPONENTS SHALL NOT BE LIABLE FOR ANY SPECIAL, INDIRECT, INCIDENTAL, OR CONSEQUENTIAL DAMAGES, INCLUDING WITHOUT LIMITATION, LOST REVENUES OR LOST PROFITS, WHICH MAY RESULT FROM THE USE OF THESE MATERIALS.

VPT Components products are not intended for use in medical, lifesaving or life sustaining applications. VPT Components customers using or selling VPT Components products for use in such applications do so at their own risk and agree to fully indemnify VPT Components for any damages resulting from such improper use or sale.